

PRAGATI

ENGINEERS

*Prominent Manufacturer in quality
Mechanical Shaft Seals & Rotary Joints*





Leading Mechanical Shaft Seals & Rotary Joint Manufacturer & Supplier across the country.

We would like to introduce our self as renowned manufacture & supplier in mechanical seals. Pragati Engineers is the fastest growing & emerging Mechanical Seals & Rotary Joints manufacturer and leading supplier across the country . High skilled engineers with intense knowledge and vast experience has supported the company to acquire the eminent position among the most reliable Manufacturers of mechanical seals & rotary joints in entire India.

We are manufacturer of Mechanical Seals equivalent to John Crane, Burgmann, Flowserve, Chesterton, Flex-a -seal, Vulcan and many others. Our products include Spring Mechanical Seal, Metal Bellows Seal, Elastomer Bellows Seal, PTFE Bellow Seal, Cartridge Seal, Agitator Seal, Seal Faces material including Tungsten Carbide, Silicon Carbide, Carbon-R, Carbon-M, CFT, GFT, "O" Rings and Mechanical Seal Parts including Gland Plate, Shaft Sleeve & Seal Support System for Pumps, Agitators, Mixers, Vacuum Pumps, Blenders, Reactors and Pharmaceutical Machinery and many more equipments.

We supply & Development Mechanical Seal for Petrochemical, Refinery, Paper Mill, Oil Mill, Textile Mills, Chemical Plant, Pharmaceutical Plant, Steel Plant, Paint Industries, Milk Dairy's etc. We can comply to any of your quick timely requirement. We enclose our product glimpse to get a brief idea for our establishments for further enquiry & information feel free to have a word with us.

We would request to you please cooperate with our quality products, competitive price and shortest delivery time and send us your valuable inquiry, drawings or samples as per your requirements. We would like receive valuable enquiries, orders for repairing, Servicing, fresh mechanical seals & its spare .

Our philosophy

To deliver Quality Mechanical Seals & Rotary joints product and establish our self as one of the finest and leading manufacturer of all mechanical seals through constant improvement, R&D, Quality assurance & Efficient product execution into our served industries.

TEFLON BELLOW MECHANICAL SEAL

TYPE | PT25

PTEF (Teflon) Bellow Mechanical seals for light & extremely corrosive chemical including concentrated acid, salt, strong oxidising & chemically active organic compounds

OPERATING LIMITS

Shaft Dia	10mm to 70mm
Pressure	10 bar
Temperature	-20° to 180°
Speed	2900RPM (Max)

SEAL FACE MATERIALS

Carbon, Ceramic (99.5), GFT, CFT Silicon Carbide,

METAL COMPONENTS

Ss316, Ss304, Monel, Alloy - 20, Hastelloy - C,

APPLICATION

- Acid & Acidic Fluids
- General & Light Chemical
- Extremely Corrosive services

SECONDARY SEALING

PTEF(Teflon) Bellow, Gasket

FEATURES

- Maintenance Free
- Leak Proof
- Optimum Thickness
- Inside Mounted



MULTI SPRING MECHANICAL SEAL

TYPE | PM30

Multi Spring externally mounted reverse balanced mechanical seals designed with 'O' Ring as a Secondary sealing member suitable for various application which are being pumped moderated & high pressure.



OPERATING LIMITS

Shaft Dia	25mm to 100mm
Pressure	Upto 25 bar
Temperature	-45° to 200°
Speed	Upto 3000RPM

SEAL FACE MATERIALS

Carbon, Ceramic (99.5), Silicon Carbide, Tungsten Carbide.

METAL COMPONENTS

Ss316, Ss304, Monel, Alloy - 20, Hastelloy - C,

APPLICATION

- Acid & Acidic Fluids
- General & Light Chemical
- Extremely Corrosive services

SECONDARY SEALING

Viton, Silicon, NBR, PTEF, GFT TCV.

FEATURES

- Maintenance Free
- Leak Proof
- Optimum Thickness
- Inside Mounted

We are one of the best rubber bellow mechanical seal manufacturers, manufacturing optimum rubber bellow type mechanical seal.

OPERATING LIMITS

Shaft Dia	12mm to 100mm
Pressure	10 kg/cm ²
Temperature	-30° to 170°
Speed	3000RPM

SEAL FACE MATERIALS

Carbon, Silicon Carbide, Tungsten Carbide, Ceramic (99.5%), Stellite.

METAL COMPONENTS

SS 316, SS 304, Alloy 20, Hastelloy C.

APPLICATION

- Water pumps
- Sewage pumps
- Submersible pumps

SECONDARY SEALING

TTV, GFT, SILICON, VITON, PTFE, GRAFOIL.

FEATURES

- Maintenance Free
- Leak Proof
- Optimum Thickness
- Inside Mounted

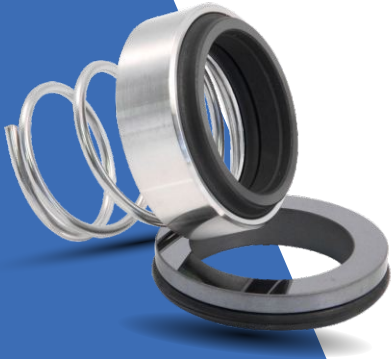
RUBBER BELLOW MECHANICAL SEAL

TYPE | PR35



CONICAL SPRING MECHANICAL SEAL

TYPE | PC40



Single conical spring unbalanced Mechanical Seal with “O” ring as secondary sealing offered for wide service applications.

OPERATING LIMITS

Shaft Dia	10mm to 70mm
Pressure	10 bar
Temperature	-20° to 180°
Speed	2900RPM (Max)

SEAL FACE MATERIALS

Carbon, Silicon Carbide, Tungsten Carbide, Ceramic (99.5%), Stellite.

METAL COMPONENTS

Ss316, Ss304, Monel, Alloy - 20, Hastelloy - C ,

APPLICATION

- Chemical Process Pump.
- Oil Refineries.
- Thermal Power Plants.
- Dairy & Pharmaceuticals
- Marine Industries.

SECONDARY SEALING

E.P.D.M., TTV, GFT, silicon, Viton, PTFE, Neoprene

FEATURES

- Maintenance Free
- Optimum Thickness
- Inside Mounted
- Unbalanced.

single spring unbalanced/balanced Mechanical Seals suitable for wide service applications.

SINGLE SPRING MECHANICAL SEAL

TYPE | PS45

OPERATING LIMITS

Shaft Dia	15mm to 190mm
Pressure	10 bar
Temperature	-30° to 280°
Speed	2900RPM (Max)

SEAL FACE MATERIALS

Carbon, Silicon Carbide, Tungsten Carbide, Ceramic (99.5%), Stellite.

METAL COMPONENTS

Ss316, Ss304, Monel, Alloy - 20, Hastelloy - C ,

APPLICATION

- Chemical Process Pump.
- Oil Refineries.
- Thermal Power Plants.
- Nuclear Plant.
- Petroleum & Paper Industries..

SECONDARY SEALING

E.P.D.M., TTV, GFT, silicon, Viton, PTFE, Neoprene

FEATURES

- Unbalance seal
- Inside mounted
- Maintenance free
- Optimum thickness
- Long life service..



WAVE SPRING MECHANICAL SEAL

TYPE | PW50



Double acting cartridge mechanical seals having integral sleeve and gland plate. These multi spring design seal are pre-assembled, which could be directly installed without any dimensional adjustment during installation.

OPERATING LIMITS

Shaft Dia	30mm to 150mm
Pressure	15 bar
Temperature	-200° to 180°
Speed	Up to 20 m/s

SEAL FACE MATERIALS

Carbon, Ceramic, Silicon, Tungsten Carbide.

METAL COMPONENTS

Ss316, Ss304

APPLICATION

- Slurry Pump.
- Sludge Pump.
- Pharmaceuticals.
- Petroleum.
- Pulp & Paper industries.

SECONDARY SEALING

Viton, E.P.D.M, Nitrile, Silicon, TTV, P.T.F.E 'O' Ring, Neoprene, GFT, Kalrez.

FEATURES

- Factory Assembled Tested,
- Flushing Quenching,
- Independent of Direction of Rotation,
- Metal Bellow.

Generally used in Chemical Process Pump, Oil Refineries, Thermal Power Plants, Nuclear Plant, Petroleum, Paper, Pulp Industries & all the Marine Industries.

GRUNDFOS MECHANICAL SEAL

TYPE | PG55

OPERATING LIMITS

Shaft Dia	12, 16 & 22mm
Pressure	10 bar
Temperature	-30° to 200°
Speed	2500RPM

SEAL FACE MATERIALS

Carbon, Silicon Carbide, Tungsten Carbide.

METAL COMPONENTS

Ss316, Ss304,

APPLICATION

- Chemical Process Pump,
- Oil Refineries & Thermal Power Plants,
- Nuclear Plant, Petroleum, Paper,
- Pulp Industries & all the Marine Industries.

SECONDARY SEALING

E.P.D.M. ,Silicon, Viton, Neoprene.

FEATURES

- Maintenance Free
- Leak Proof
- Optimum Thickness
- Inside Mounted



REACTOR MECHANICAL SEAL

TYPE | PR60



Reactor Mechanical seals are developed and fabricated by dexterous professionals utilizing optimum-grade material and up-to-date machines at our end.

OPERATING LIMITS

Shaft Dia	25mm to 145mm
Pressure	8 bar (Max)
Temperature	180°
Speed	320RPM

SEAL FACE MATERIALS

Carbon, Ceramic (99.5), Silicon Carbide, Tungsten Carbide.

METAL COMPONENTS

Ss316, Ss304, Monel, Alloy - 20, Hastelloy - C ,

APPLICATION

- Acid & Acidic Fluids
- General & Light Chemical
- Extremely Corrosive services

SECONDARY SEALING

Viton, Silicon, NBR, PTFE, GFT TCV.

FEATURES

- Longer Service Life,
- High Strength,
- Fine Finishing.

The most common are AM350 and Hastelloy C. Usually with Stainless Steel end fittings permits these mechanical seals to be used for high temperature services beyond the range of mechanical seals with synthetic rubber sealing members.

OPERATING LIMITS

Shaft Dia	10mm to 200mm
Pressure	20 bar
Temperature	-20° to 400°
Speed	3000RPM (Max)

SEAL FACE MATERIALS

Carbon-M, Lecrolloy, Silicon Carbide, Tungsten Carbide, Stellite.

METAL COMPONENTS

SS 316, SS 304, HAST-C, HAST-B

APPLICATION

- Dairy Industries.
- Beverages Industries.
- Dying And Pigmenting Industries.
- Textile Industries.

SECONDARY SEALING

Garfoil, PTFE, GFT, CFT, Viton, EPDM, Aflas, Silicon.

FEATURES

- Maintenance Free
- Leak Proof
- Optimum Thickness
- Inside Mounted

METAL BELLOW MECHANICAL SEAL

TYPE | PM65



AGITATOR MECHANICAL SEAL

TYPE | PA70



Owing to the presence of our well-informed team members, we have been able to manufacture and supply a comprehensive range of Agitator Mechanical Seal.

OPERATING LIMITS

Shaft Dia	25mm to 150mm
Pressure	10 bar
Temperature	-40° to 280°
Speed	2900RPM (Max)

SEAL FACE MATERIALS

Carbon, Silicon Carbide, Tungsten Carbide, Ceramic (99.5%), Stellite.

METAL COMPONENTS

Ss316, Ss304, Monel, Alloy - 20, Hastelloy - C ,

APPLICATION

- General Chemicals and Its Vapours.
- Food Products.
- Pharmaceutical Products.
- Light Hydrocarbons & Its Vapours.
- Petrochemicals & Its Vapours..

SECONDARY SEALING

E.P.D.M., TTV, GFT, silicon, Viton, PTFE, Neoprene

FEATURES

- Maintenance Free
- Optimum Thickness
- Inside Mounted
- Unbalanced.

Cartridge unbalanced single mechanical seals are single acting cartridge Design unbalanced mechanical seals suitable for slurries, sludge's, syrup, water, Oil & chemicals used in moderate pressure pumps.

OPERATING LIMITS

Shaft Dia	25mm to 100mm
Pressure	Upto 25 kg/cm ²
Temperature	-40° to 280°
Speed	RPM subject to specification

SEAL FACE MATERIALS

Carbon, Silicon Carbide, Tungsten Carbide, Aluminum Oxide Coating.

METAL COMPONENTS

SS 316, SS 304, Hastelloy C, Hastelloy B, Monel, Alloy 20.

APPLICATION

- Slurry pumps
- Food industries
- Water treatment
- Pulp & Paper industries

SECONDARY SEALING

Viton, E.P.D.M, Nitrile, Silicon, TTV, P.T.F.E 'O' Ring, Neoprene, Kalrez.

FEATURES

- High performance,
- It can tolerate reversible pressure

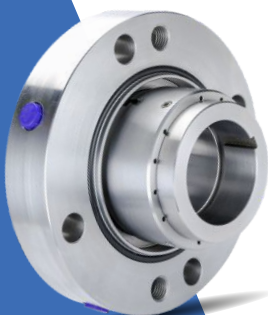
SINGLE CARTRIDGE MECHANICAL SEAL

TYPE | PS75



DOUBLE CARTRIDGE MECHANICAL SEAL

TYPE | PD80



Cartridge unbalanced double mechanical seals are double acting cartridge design Unbalanced mechanical seals suitable for slurries, sludge's, syrup, water, oil & chemicals used in Low & high pressure pumps.

OPERATING LIMITS

Shaft Dia	20mm to 100mm
Pressure	15 bar
Temperature	-40° to 180°
Speed	Subject to application

SEAL FACE MATERIALS

Carbon-M, Carbon-R, Silicon Carbide, Tungsten Carbide.

METAL COMPONENTS

SS 316, SS 304, Hastelloy C, Hastelloy B, Monel, Alloy 20.

APPLICATION

- Thermic Fluid.
- Fatty Acid.
- Hydrocarbons.
- Acid Pumps.
- Petroleum Refineries

SECONDARY SEALING

Viton, Kalrez, Graphite, EPR, EPDM, NBR.

FEATURES

- Unbalance Seal In Side Mounted Seal
- Universal Application Opportunities
- Self Cleaning Effect.

DURA TYPE MECHANICAL SEAL

TYPE | PD85

PTEF (Teflon) Bellow Mechanical seals for light & extremely corrosive chemical including concentrated acid, salt , strong oxidising & chemically active organic compounds

OPERATING LIMITS

Shaft Dia	1.000" – 4.500"
Pressure	10 bar
Temperature	160°C / 320°F
Velocity	22.5 M/S – 4500 FPM

SEAL FACE MATERIALS

Ceramic, Silicon Carbide,
Tungsten Carbide

METAL COMPONENTS

Ss316,

APPLICATION

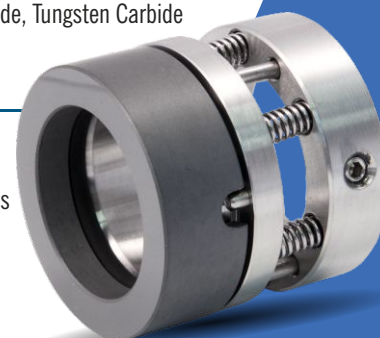
- Thermal Power Plants,
- Nuclear Plant, Petroleum,
- Paper, Pulp Industries & all the Marine Industries.

SECONDARY SEALING

Carbon, Silicon Carbide, Tungsten Carbide

FEATURES

- Maintenance Free
- Leak Proof
- Optimum Thickness
- Inside Mounted



ROTARY JOINT MECHANICAL SEAL

TYPE | PR90

Multi Spring externally mounted reverse balanced mechanical seals designed with 'O' Ring as a Secondary sealing member suitable for various application which are being pumped moderated & high pressure.

OPERATING LIMITS

Shaft Dia	0.5" to 5"
Pressure	Upto 275 bar
Temperature	upto 350°
Speed	Upto 2100RPM
Flow	Upto 200lpm

SEAL FACE MATERIALS

Carbon-M, Carbon-R, Silicon Carbide,
Tungsten Carbide.

METAL COMPONENTS

Ss316, SS304,

APPLICATION

- Dryers & Chemicals Industries
- Food Processing Industries
- PVC film Industries
- Paper Industries
- Steel Plant & Water Industries

SECONDARY SEALING

Grafoil, Viton, TTV, PTFE, EPR,
EPDM, NBR.

FEATURES

- Low torque
- Long service life
- Easy repair & maintenance



These products are developed using the best material and innovative technology, to ensure their consistency with the industrial standards.

Overview

Packing & Rubber parts perform two important functions they hold the oil in place, lubricating the moving machine parts, thus reducing friction, grinding and heat in the process. they are used to retain or confine any form of fluid inside a particular device, especially devices such as hydraulic systems that feature a host of moving parts.

PACKING & RUBBER PARTS



Quality Commitment

We have zero tolerance for defects. Being quality cautious quality products is our center mission, vision, and goal. We treat our every products as premium quality range.



Wide Experience Growth

Being an client-centric organization, we are engaged in offering a superior range of mechanical seals products & all mechanical components. To add more clients with us, we are offering a qualitative range to our clients within the stipulated time-frame with customization solutions to serve them as par their requirements. Furthermore, we also hold expertise in meeting urgent and bulk consignments.

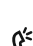



We serve industries like

- Chemical Process Pump.
- Oil Refineries.
- Thermal Power Plants.
- Dairy & Pharmaceuticals
- Marine Industries.
- Steel Plant.
- Plastic Moulding Industries
- Agro Chemical Industries
- Textile Industries.
- FMCG Industries.
- Paper Mills
- PVC film Industries

Let's Talk

 Pirojpura Road, Opp Amin Weigh Bridge, Chhapi Highway, Banaskantha, North Gujarat - 385210

 +91 02739 271 151
 +91 998 71 15 151

 info@pragatiseals.com

 www.pragatiseals.com

